

NCDN Antibody (N-term)
Affinity Purified Rabbit Polyclonal Antibody (Pab)
Catalog # AP16948a**Specification**

NCDN Antibody (N-term) - Product Information

| | |
|-------------------|---|
| Application | WB,E |
| Primary Accession | Q9UBB6 |
| Other Accession | Q9Z0E0 , Q2KJ97 , NP_001014841.1 , NP_055099.1 |
| Reactivity | Human |
| Predicted | Bovine, Mouse |
| Host | Rabbit |
| Clonality | Polyclonal |
| Isotype | Rabbit IgG |
| Calculated MW | 78864 |
| Antigen Region | 114-144 |

NCDN Antibody (N-term) - Additional Information**Gene ID** 23154**Other Names**

Neurochondrin, NCDN, KIAA0607

Target/Specificity

This NCDN antibody is generated from rabbits immunized with a KLH conjugated synthetic peptide between 114-144 amino acids from the N-terminal region of human NCDN.

Dilution

WB~~1:1000

E~~Use at an assay dependent concentration.

Format

Purified polyclonal antibody supplied in PBS with 0.09% (W/V) sodium azide. This antibody is purified through a protein A column, followed by peptide affinity purification.

Storage

Maintain refrigerated at 2-8°C for up to 2 weeks. For long term storage store at -20°C in small aliquots to prevent freeze-thaw cycles.

Precautions

NCDN Antibody (N-term) is for research use only and not for use in diagnostic or therapeutic procedures.

NCDN Antibody (N-term) - Protein Information**Name** NCDN ([HGNC:17597](#))

Synonyms KIAA0607

Function Probably involved in signal transduction in the nervous system, via increasing cell surface localization of GRM5/mGluR5 and positively regulating its signaling (PubMed:[33711248](#)). Required for the spatial learning process. Acts as a negative regulator of Ca(2+)-calmodulin-dependent protein kinase 2 (CaMK2) phosphorylation. May play a role in modulating melanin-concentrating hormone-mediated functions via its interaction with MCHR1 that interferes with G protein-coupled signal transduction. May be involved in bone metabolism. May also be involved in neurite outgrowth (Probable).

Cellular Location

Cytoplasm, cytosol. Endosome membrane {ECO:0000250|UniProtKB:O35095}; Lipid-anchor. Cell projection, dendrite {ECO:0000250|UniProtKB:O35095}. Postsynapse {ECO:0000250|UniProtKB:O35095}. Note=Localizes to somatic regions of neurons. Localization to endosome membrane requires palmitoylation {ECO:0000250|UniProtKB:O35095}

Tissue Location

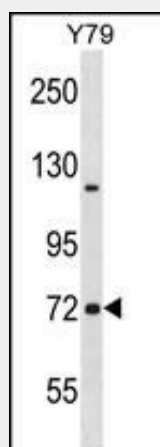
Abundantly expressed in whole adult brain and in all individual brain regions examined, including spinal cord. Weakly expressed in ovary, testis, fetal brain and small intestine

NCDN Antibody (N-term) - Protocols

Provided below are standard protocols that you may find useful for product applications.

- [Western Blot](#)
- [Blocking Peptides](#)
- [Dot Blot](#)
- [Immunohistochemistry](#)
- [Immunofluorescence](#)
- [Immunoprecipitation](#)
- [Flow Cytometry](#)
- [Cell Culture](#)

NCDN Antibody (N-term) - Images



NCDN Antibody (N-term) (Cat. #AP16948a) western blot analysis in Y79 cell line lysates (35ug/lane). This demonstrates the NCDN antibody detected the NCDN protein (arrow).

NCDN Antibody (N-term) - Background

This gene encodes a leucine-rich cytoplasmic protein, which is highly similar to a mouse protein that negatively regulates Ca/calmodulin-dependent protein kinase II phosphorylation and may be essential for spatial learning processes. Several alternatively spliced transcript variants of this gene have been described.

NCDN Antibody (N-term) - References

Dateki, M., et al. J. Biol. Chem. 280(21):20503-20508(2005)
Mochizuki, R., et al. Biochem. Biophys. Res. Commun. 310(4):1219-1226(2003)
Tchernev, V.T., et al. Mol. Med. 8(1):56-64(2002)
Ohoka, Y., et al. Biochem. Biophys. Res. Commun. 280(1):237-243(2001)
Mochizuki, R., et al. Biochim. Biophys. Acta 1490(3):367-368(2000)